

Telegraph Made World of Difference

CONTENTS

- [1 Telegraph Made World of Difference](#)
- [2 Sources used in this story](#)
- [3 Related Stories](#)
- [4 Further sources](#)
 - [4.1 Books](#)
 - [4.2 Articles](#)
 - [4.3 Other](#)
 - [4.4 Web Resources](#)

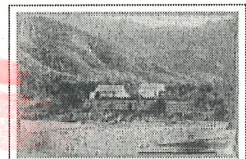
1856

The South and North Islands were connected by an under-sea telegraph cable across Cook Strait in 1866. Ten years later, the telegraph connection between London and Wakapuaka, Nelson, spanned a fragile 15,757 mile (25,558 km) network via Gibraltar, Suez, Bombay, Darwin and Sydney. New Zealand was connected to the rest of the world!

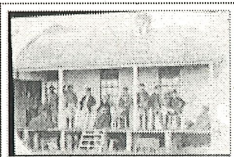
In the mid-19th century, New Zealand's early European colonists had to wait two months or more for mail to arrive by sea from the other side of the world. Meanwhile, an [Industrial Revolution](http://www.britannica.com/EBchecked/topic/287086/Industrial-Revolution) (<http://www.britannica.com/EBchecked/topic/287086/Industrial-Revolution>) was sweeping Europe, with the rapid development of technologies such as the [electric telegraph](http://www.britannica.com/EBchecked/topic/585850/telegraph) (<http://www.britannica.com/EBchecked/topic/585850/telegraph>).

The New Zealand Government was keen to see the country connected by telegraph both internally and with the outside world. Australia was linked to Europe in 1872, with messages being sent to Sydney by sea and cabled from there. ¹

The first Cook Strait communications cable, between [Lyaill Bay](http://maps.google.co.nz/maps?q=lyall+bay+wellington&ie=UTF8&split=0&q=nz&ei=q5-LScrJLYm4sAO4m72ICQ&ll=-41.305408,174.795227&spn=0.099035,0.215607&z=12&iwloc=addr) (<http://maps.google.co.nz/maps?q=lyall+bay+wellington&ie=UTF8&split=0&q=nz&ei=q5-LScrJLYm4sAO4m72ICQ&ll=-41.305408,174.795227&spn=0.099035,0.215607&z=12&iwloc=addr>) in Wellington and White's Bay in Marlborough, was completed on 26 August, 1866. The simple copper telegraph cable, laid across the Cook Strait seabed, enabled quick communication between the North and South Islands for the first time.



(<http://www.thehook.org.nz/assets/enterprises/whitesbay2.jpg>)
Southern end of Cook Strait's telegraph cable - Whites Bay 1871, Marlborough Museum
(<http://www.marlboroughmuseum.org>), 0000.900.0735
[Click image to enlarge](#)



(<http://www.thehook.org.nz/assets/enterprises/whitesbay2.jpg>)
Whites Bay cable station group, Marlborough Museum
(<http://www.marlboroughmuseum.org>), 0000.900.0735
[Click image to enlarge](#)

The isolated and often stormy situation of the [White's Bay](http://maps.google.co.nz/maps?f=q&hl=en&qeocode=&q=whites+bay&ll=-41.427283,173.9534&spn=0.42835,0.878906&ie=UTF8&ll=-41.371398,174.058113&spn=0.111302,0.236549&z=12&iwloc=addr) (<http://maps.google.co.nz/maps?f=q&hl=en&qeocode=&q=whites+bay&ll=-41.427283,173.9534&spn=0.42835,0.878906&ie=UTF8&ll=-41.371398,174.058113&spn=0.111302,0.236549&z=12&iwloc=addr>) Cable Station made it an unpopular posting. The staff and equipment were moved to [Blenheim](http://maps.google.co.nz/maps?f=q&hl=en&qeocode=&q=blenheim&ll=-41.325411,173.9534&spn=0.111302,0.236549&z=12&iwloc=addr) (<http://maps.google.co.nz/maps?f=q&hl=en&qeocode=&q=blenheim&ll=-41.325411,173.9534&spn=0.111302,0.236549&z=12&iwloc=addr>) in 1873, and the telegraph station finally closed in 1896, after a direct link had been established between Wellington and Christchurch. A building from the cable station is still at White's Bay. ²

On Monday 21 February, 1876, a sub-marine cable was opened between [La Perouse](http://maps.google.co.nz/maps?f=q&source=s_q&hl=en&qeocode=&q=la+perouse,+sydney&ll=43.166124,12.389832&spn=0.38463,0.862427&q=nz&q=la+perouse&ie=UTF8&ll=33.96358,151.231613&spn=0.109344,0.215607&z=12&iwloc=addr) (http://maps.google.co.nz/maps?f=q&source=s_q&hl=en&qeocode=&q=la+perouse,+sydney&ll=43.166124,12.389832&spn=0.38463,0.862427&q=nz&q=la+perouse&ie=UTF8&ll=33.96358,151.231613&spn=0.109344,0.215607&z=12&iwloc=addr) (Sydney) and [Cable Bay](http://maps.google.co.nz/maps?f=q&source=s_q&hl=en&qeocode=&q=cable+bay&ll=-41.244772,172.617188&spn=25.324594,55.195313&ie=UTF8&ll=-41.171677,173.420563&spn=0.099238,0.215607&z=12&iwloc=addr) (http://maps.google.co.nz/maps?f=q&source=s_q&hl=en&qeocode=&q=cable+bay&ll=-41.244772,172.617188&spn=25.324594,55.195313&ie=UTF8&ll=-41.171677,173.420563&spn=0.099238,0.215607&z=12&iwloc=addr) in Nelson. Laid, owned and managed by the Eastern Extension Australasia and China Telegraph Company Ltd, the cable was New Zealand's sole communication link with the rest of the world until 1902. ³

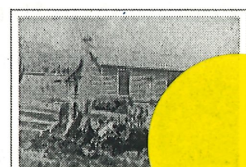
The sub-marine engineering of the day was fraught with difficulties from weather, sea depth and currents. It was most important to keep the copper wire conductors protected and insulated, with gutta percha, a latex coating from Malaya (Malaysia), being used to cover them. The first cable was expected to last 10 years, but continued in use for 41 years. ⁴



(<http://www.thehook.org.nz/assets/enterprises/cablebay.jpg>)
Cable Bay, the Nelson Provincial Museum
(<http://www.museumnp.org.nz>), 0000.900.0735
[Click image to enlarge](#)

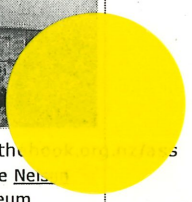
The settlement at Cable Bay grew as the demand for telegraphic services increased. By 1888 there were 14 staff, including a superintendent, cable and telegraph men. A press man had the job of 'filling out' the international press briefs and sending them on to newspapers. ⁵

A second cable was laid in 1890, by which time 17 staff and their families lived at Cable Bay. By all accounts, the community enjoyed good relations with nearby neighbours, [Huria and Hemi Matenga](http://www.teara.govt.nz/en/1966/matenga-huria-te-amoho-wikitoria/1), and there was plenty of on-station fun, with a billiard room, tennis courts and water-related activities. ⁶



(<http://www.thehook.org.nz/assets/enterprises/cablebay.jpg>)
Cable Bay, the Nelson Provincial Museum
(<http://www.museumnp.org.nz>), 0000.900.0735
[Click image to enlarge](#)

3rd



In the early 1900s other cables were laid, including Vancouver to Doubtless Bay (Northland) in 1901, ⁷

and Sydney to Auckland in 1912. ⁸

(<http://www.museumnp.org.nz/>)
, Copy Collection, C1781
[Click to enlarge](#)

The Cable Bay link was re-routed to Titahi Bay (http://maps.google.co.nz/maps?f=q&source=s_q&hl=en&q=titahi+bay%22+wellington&ll=-41.14195,173.420563&sspn=0.099283,0.215607&q=nz&ie=UTF8&ll=-41.093842,174.838486&sspn=0.049678,0.107803&z=13&iwloc=addr) in 1917, with an underground cable to the Eastern Extension

Company's offices in central Wellington. The staff from Cable Bay were relocated to Wellington overnight on 22 August, 1917 and it was the end of an era for the small community. The cable station land was sold by the Crown in 1919. ⁹

Various Cook Strait cables have linked the two islands for nearly 150 years, but the route is fractured with fault lines. Telecom laid a new \$38 million fibre optic cable between Levin (http://maps.google.co.nz/maps?f=q&source=s_q&hl=en&q=levin&ll=-41.244772,172.617188&sspn=25.324594,55.195313&ie=UTF8&ll=-40.611607,175.286522&sspn=0.100082,0.215607&z=12&iwloc=addr) (Horowhenua) and Cable Bay in 2001, to provide additional security should a large earthquake hit the region. ¹⁰

Year telegrams sent	International telegrams sent	International telegrams received
1900	62,275	55,601
1910	120,599	109,389
1964	753,750	679,089

McLintock, A.H. (ed) Post Office. In *An Encyclopaedia of New Zealand*, originally published in 1966. *Te Ara - The Encyclopedia of New Zealand* (<http://www.teara.govt.nz/1966/P/PostOffice/OverseasTelecommunications/en>).

2008

Written by: Joy Stephens **Tags:** telegraph, telephone, communications

Sources used in this story

1. Newport, J. (1973). Cable and Delaware Bays. *Journal of the Nelson Historical Society*, 2(6), 24.
2. Brayshaw, N.H.(1966) *White's Bay Telegraph Station Centennial*. Unpublished Manuscript (NPM)
3. Airey, E. (2005). *The taming of distance: New Zealand's first international telecommunications*. Wellington, N.Z.: Dunmore Publishing. pp 1, 15.
4. Airey, p.22.
5. Airey, p.73.
6. Airey, p.62, 80, 83.
7. Newport, p.24.
8. McIntock, A.H. (ed) Post Office. In *An Encyclopaedia of New Zealand*, originally published in 1966. *Te Ara - The Encyclopedia of New Zealand*. <http://www.TeAra.govt.nz/1966/P/PostOffice/en> (<http://www.teara.govt.nz/1966/P/PostOffice/en>)
9. Airey, p.124.
10. King, P. (May/June 2001). Lighting up the South. *E.nz magazine*. 2(3),14-19

Want to find out more about the Telegraph Made World of Difference ? [View Further Sources here](http://www.thehook.org.nz/telegraph-made-world-of-difference/#Further_sources) (http://www.thehook.org.nz/telegraph-made-world-of-difference/#Further_sources).

Related Stories

- [Maori Rescues \(maori-rescues/\)](#) (the Delaware)
- [Murchison earthquakes \(the-murchison-earthquake/\)](#)
- [Tophouse \(tophouse/\)](#)

Do you have a story about this subject? [Find out how to add one here. \(user/addstory/\)](#)

Comment on this story

POST YOUR COMMENT

COMMENTS

No one has commented on this page yet.

Further sources - Telegraph Made World of Difference

BOOKS

- Airey, Elizabeth (2005). *The taming of distance: New Zealand's first international telecommunications*. Wellington, N.Z.: Dunmore Publishing.
<http://www.worldcat.org/oclc/156780982> (<http://www.worldcat.org/oclc/156780982>)
- McAloon, J. (1997). *Nelson a regional history*. Whatamango Bay, Queen Charlotte Sound, N.Z : Cape Catley Ltd in association with Nelson City Council.
<http://www.worldcat.org/oclc/50310188> (<http://www.worldcat.org/oclc/50310188>)
- MacDonald, C.A. (2003) *Pages from the past: some chapters in the history of Marlborough*. Christchurch, N.Z.: Cadsonbury Publications, pp 282 - 283.
<http://www.worldcat.org/oclc/155888582> (<http://www.worldcat.org/oclc/155888582>)
- Newport, Jeff. (1966). *A short history of the Nelson Province*. Nelson, N.Z.: Nikau Press
<http://www.worldcat.org/oclc/39908852> (<http://www.worldcat.org/oclc/39908852>)
- Wastney, P.V. & N.L. (1982). *Roads of yesterday: Whangamoā, Wakapuaka and Maungatapu*. Nelson, N.Z.: The authors.
http://www.worldcat.org/oclc/35100270&referer=brief_results (http://www.worldcat.org/oclc/35100270&referer=brief_results)
- Wilson, A.C. (1994). *Wire & wireless: A history of telecommunications in New Zealand 1890-1987*. Palmerston North, N.Z.: Dunmore Press Ltd.
<http://www.worldcat.org/oclc/34478875> (<http://www.worldcat.org/oclc/34478875>)

ARTICLES

- Christian, P. (2001, March 26). Cable comes ashore after 200km journey. *The Press*. p.7.
- The Electric Telegraph (1866, March 20), *The Colonist*. (held on microfilm Nelson Public Library, Nelson Provincial Museum)
- Grappling for the Cook Strait Cable. (1876, January 29), Otago Witness, p9.
<http://paperspast.natlib.govt.nz/cgi-bin/paperspast?a=d&d=OW18760129.2.30&e=-----10--1----0-all>
(<http://paperspast.natlib.govt.nz/cgi-bin/paperspast?a=d&d=OW18760129.2.30&e=-----10--1----0-all>)
- Laying the Cable Across Cook Strait. (1866, August 18), *Nelson Examiner and New Zealand Chronicle*, p2.
<http://paperspast.natlib.govt.nz/cgi-bin/paperspast?a=d&d=NENZC18660818.1.2&cl=&e=-----en--1----0-all>
(<http://paperspast.natlib.govt.nz/cgi-bin/paperspast?a=d&d=NENZC18660818.1.2&cl=&e=-----en--1----0-all>)
- Lawrey, M (2005, June 23). Cable Bay's high-tech history. *The Leader*
- The New Cable (1890, May 7). *Grey River Argus*. p 2
<http://paperspast.natlib.govt.nz/cgi-bin/paperspast?a=d&d=GRA18900507&e=-----en--1----0-all>
(<http://paperspast.natlib.govt.nz/cgi-bin/paperspast?a=d&d=GRA18900507&e=-----en--1----0-all>)
- New cable possible for Cable Bay (1999, May 26). *The Nelson Mail*. Edition 2. p 1.
- Newport, J. (1973). Cable and Delaware Bays. *Journal of the Nelson Historical Society*, 2(6), 24.
http://www.nzetc.org/tm/scholarly/tei-NHSJ02_06-t1-body1-d2-d23.html (http://www.nzetc.org/tm/scholarly/tei-NHSJ02_06-t1-body1-d2-d23.html)
- Repairing the Cables (1901, April 15), *The Colonist*, p.3
<http://paperspast.natlib.govt.nz/cgi-bin/paperspast?a=d&d=TC19010415.1.3&cl=&e=-----en--1----0-all>
(<http://paperspast.natlib.govt.nz/cgi-bin/paperspast?a=d&d=TC19010415.1.3&cl=&e=-----en--1----0-all>)
- Same name better technology. (2001, March 26). *The Nelson Mail*, p.2.
- The Telegraph from London to New Zealand. (1876, March 10), *West Coast Times*, p 2
<http://paperspast.natlib.govt.nz/cgi-bin/paperspast?a=d&d=WCT18760310&e=-----en--1----0-all>
(<http://paperspast.natlib.govt.nz/cgi-bin/paperspast?a=d&d=WCT18760310&e=-----en--1----0-all>)

OTHER

Unpublished material

Held [Nelson Provincial Museum](http://www.museumnp.org.nz) (<http://www.museumnp.org.nz>)

- Blackett, John George.(1881). *Court House and Post & Telegraph Station for Collingwood County of Collingwood*. PL770
- Scott, John. (1895). *Proposed addition to men's quarters Cable Bay*. PL39

Held [Marlborough Museum](http://www.marlboroughmuseum.org.nz) (<http://www.marlboroughmuseum.org.nz>)

- Brayshaw, N.H.(1966) *White's Bay Telegraph Station Centennial*. For the Historical Community Whites Bay Domain Board. Unpublished Manuscript
- Marlborough Historical Society. *Whites Bay Telegraph research box*
- Riddell, Mary. *Marlborough Postal History. Photocopies of stamp collection in a 100 leaf folder. Reference 2005.259.0001, Marlborough Historical Society Archives*

WEB RESOURCES

- *History of Cable Bay Station* (n.d.). Retrieved September 24, 2008 from Cable Bay Holiday Park:

<http://www.cablebayfarm.co.nz/history2.html> (<http://www.cablebayfarm.co.nz/history2.html>)

- Lewis, Keith. (2007) Engineering on the sea floor. *Te Ara - the Encyclopedia of New Zealand*, Retrieved September 24, 2008 from <http://www.teara.govt.nz/en/engineering-on-the-sea-floor> (<http://www.teara.govt.nz/en/engineering-on-the-sea-floor>).
- Telegraph. (2008). In *Encyclopædia Britannica*. Retrieved September 24, 2008, from Encyclopædia Britannica Online: <http://www.britannica.com/EBchecked/topic/585850/telegraph> (<http://www.britannica.com/EBchecked/topic/585850/telegraph>) (information about the electric telegraph)
- *White's Bay* [street map] (n.d.) Retrieved September 24, 2008 from Zoom In: <http://www.zoomin.co.nz/info/nz/marlborough/picton/-whites-bay/> (<http://www.zoomin.co.nz/info/nz/marlborough/picton/-whites-bay/>) (photos of the cable station building which still stands at White's Bay):



(<http://creativecommons.org/licenses/by-nc-nd/3.0/nz/>)

This work is licensed under a [Creative Commons Attribution-NonCommercial-No Derivative Works 3.0 New Zealand License](http://creativecommons.org/licenses/by-nc-nd/3.0/nz/) (<http://creativecommons.org/licenses/by-nc-nd/3.0/nz/>)