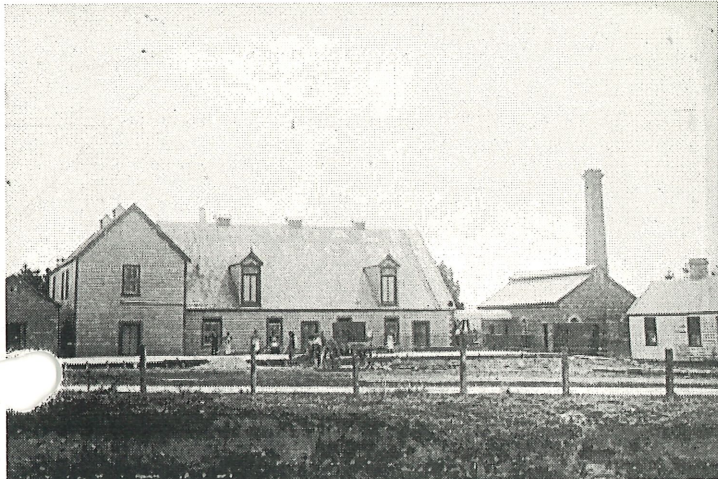


Story: Government and agriculture

Part of page 2 – Pest control, new products and incentives, 1876–1

Edendale dairy factory



1882

First dairy factory

(Nightingale, T.,
2009a)

Edendale had been an unprofitable sheep station owned by the New Zealand and Australian Land Company. The company's superintendent thought it would be more successful if broken up into smaller dairy farms. The Edendale dairy factory was established in 1882 and was the country's first large-scale dairy factory. It took advantage of government prizes awarded to encourage the export of new products.

About this item

Alexander Turnbull Library
Reference: MNZ-0607-1/4; F

Permission of the Alexander Turnbull Library, National Library of New Zealand, Te Puna Matauranga o Aotearoa, must be obtained before any re-use of this image.

How to cite this page:

Nightingale. 'Government and agriculture', Te Ara - the Encyclopedia of New Zealand, updated 1-Mar-09
<http://www.TeAra.govt.nz/en/government-and-agriculture/2/3>

All text licensed under the Creative Commons Attribution-NonCommercial 3.0 New Zealand Licence unless otherwise stated. Commercial re-use may be allowed on request. All non-text content is subject to specific conditions. © Crown Copyright.

3rd

/en/government-and-agriculture/2/3