

# MetService Blog

[metservice.com](https://metservice.com)  
[Blog homepage](#)

Submit

## Recent blog posts

Tropical Cyclone Gabrielle – Event summary February 2023

What's in a name?

Understanding Tropical Cyclones and Cyclone Track Maps

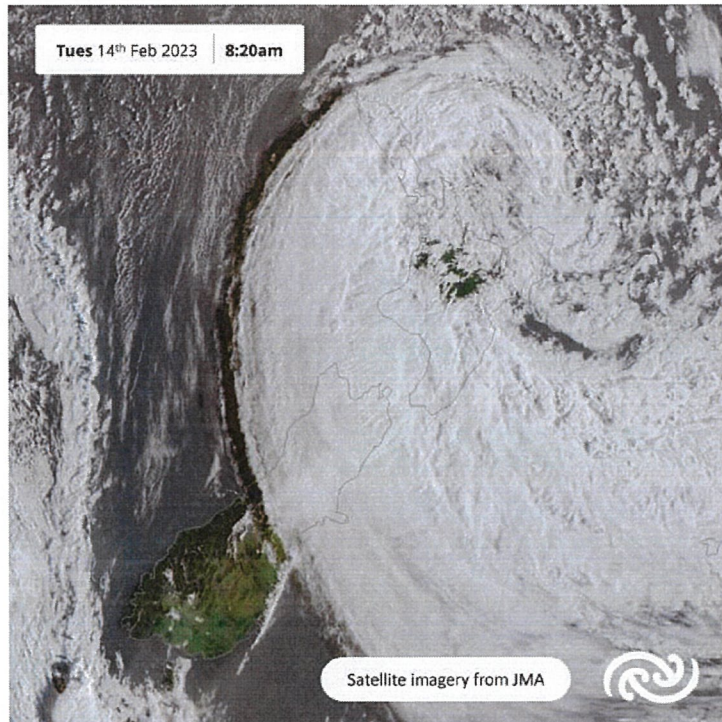
Swell Period

At Home Meteorological Experiments

The Physics of Fog  
Prepared by Lisa Murray, Head of Weather Communications at MetService

Am I at risk of experiencing a thunderstorm?

# (Murray, L., 2023)



Tues 14 Feb image: A true colour satellite image with the centre of Cyclone Gabrielle north of the Bay of Plenty. The white is the cloud and note the shadow cast by the cloud on the western side of the image.

Few weather events are as terrifying or as powerful as a tropical cyclone. MetService have tropical cyclone specialists in its National Forecasting Centre who always have their eyes on the Tropics and issue appropriate and timely warnings based on expertise, weather observation network and weather modelling tools.

Head of Weather Communications Lisa Murray says, "Gabrielle is one of the worst storms to hit Aotearoa New Zealand in living history. Like Cyclone Bola in 1988, Giselle that caused the Wahine disaster in 1968 and the unnamed cyclone of 1936, Gabrielle caused shocking impacts to the North Island."

**Q** **Between the 12th and 14th of February, parts of Aotearoa New Zealand recorded rainfall amounts of 300-400mm, wind gusts of 130-140km/h and waves were recorded as high as 11 metres along some of our coasts.** It is no wonder that the North Island experienced the devastating impacts that have been seen from Cyclone Gabrielle.

## By the numbers.

### Rain:

o Whangārei had the largest 24-hour rainfall recorded for any weather station for this event. 183.8mm was recorded from 9am 12 February – 9am 13 February. However, power and communications outages affecting some of our weather stations mean that some places may have seen much more than this.

o Over 200 mm of rain was recorded around the Auckland region with Waitakere recording the most at 248mm.

o Gisborne Airport recorded 185.3mm until power and communications ceased at 2am Tuesday.

o Napier Airport recorded its wettest February day from 9am 13 February – 9am 14 February recording 175.8mm which was also its second wettest day all time (since records began in 1950).

5th