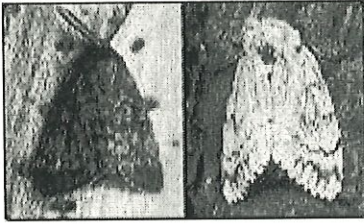


(MAF, 2008b)

Gypsy Moth

Lymantria dispar

2003



Gypsy Moth

Legal Status: Notifiable Organism

Status in New Zealand: Eradicated

Organism: Insects, worms and other land invertebrates

This pest is NOT in New Zealand

Report any sightings to hotline, ph 0800 809 966

General information

The gypsy moth is a serious pest causing millions of dollars damage around the world every year

Large numbers of caterpillars infest trees, stripping them clear of leaves and exposing them to diseases. A major outbreak of the pest here could destroy gardens, crops, forests, native bush, and the communities that depend on them.

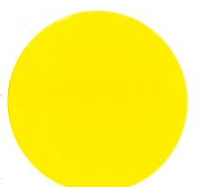
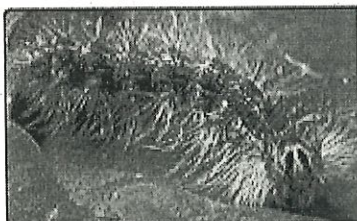
Egg masses were found on several vessels and shipping containers in the early 1990s. In response MAF studied the moth, planned for an outbreak, and established a network of traps around major ports and airports to act as an early warning system.

In March 2003 a live adult moth was caught in an early warning trap in Hamilton, a major entry point for international air freight. No more moths have since been caught, but experts believe it was unlikely to have been alone.

The excellent condition of the caught moth means it probably hatched in New Zealand. A typical gypsy moth egg mass contains between 500 and 1000 eggs.

In May 2005 MAF concluded an eradication programme to prevent an outbreak of the pest. The programme included aerial treatment, intensive pheromone trapping, and controlling the movement of vegetation out of Hamilton.

Eradication was officially announced on 26 May 2005, two generations after aerial treatment was completed.



Media Releases

- No plans for further gypsy moth aerial operations 📄 (Wednesday 12 May 2004)
- Industry Helps with Surveillance for Gypsy Moth 📄 (December 2003)

Maps

- Gypsy Moth Programme

Public Notices

- How you can help: see it... contain it... report it...
- Gypsy moth programme:
 - Aerial treatment
 - Pheromone trapping
 - Ground searching
 - Ground treatment
 - Vegetation controlled area
- About the aerial treatment:
 - Questions and answers about the Ombudsmen Office investigation into moth spraying
 - Frequently asked questions about aerial treatment operations
 - Practical advice for Hamilton residents on aerial treatment days
 - About the spray
 - Report to the Hamilton City Council on the Potential Risks of a Spraying programme Using Foray 48B. [PDF 📄 (265 KB)]
- Compensation guidelines
- Background information on the gypsy moth in Hamilton:
 - Evidence of gypsy moth population
 - Cabinet paper: Government response to recent moth incursions (25 August 2003) [PDF 📄 (412 KB)]
 - Cabinet paper: Government response to the incursion of asian gypsy moth: Additional information (1 September 2003) [PDF 📄 (286 KB)]
 - Cabinet minutes relating to the gypsy moth in Hamilton: 27 August 2003 [PDF 📄 (65 KB)], 3 September 2003 [PDF 📄 (211 KB)], 8 September 2003 PDF 📄 (191 KB)].

Health Reports

- Human Health Considerations in the Use of Btk-Based Insecticide Foray 48B for Asian Gypsy Moth in Hamilton [PDF 📄 (178 KB)]
- Clarification of issues raised in "Our Case Against Moth Spraying" [PDF 📄 (1004 KB)]
- Asian Gypsy Moth Health Report [PDF 📄 (2828 KB)]
- Asian Gypsy Moth Health Report Appendix [PDF 📄 (742 KB)]
- Asian Gypsy Moth Health Report Overall report discussion [PDF 📄 (96 KB)]
- Literature Review, Health Impacts of Aerial Spraying of Pesticides and methodologies for detecting health impacts in an exposed population [PDF 📄 (531 KB)]
- Human Health Considerations in the Use of Btk-Based Insecticide Foray 48B for Asian Gypsy Moth in Hamilton 📄
- Report to the Hamilton City Council on the Potential Risks of a Spraying Programme Using Foray 48B, Prepared by Dr Peter N Di Marco [PDF 📄 (530 KB)]
- A Comparison of Presentations of Householder Concerns to the Painted Apple Moth (PAM) and Asian Gypsy Moth (AGM) Health Services [PDF 📄 (1287 KB)]
- Expert comment
 - AGM - PAM reports review comment by Dr D Read [PDF 📄 (22 KB)]
 - AGM Peer Reviewer Statement [PDF 📄 (27 KB)]

Management

- [Response to A Gypsy Moth Incursion within New Zealand \[PDF !\[\]\(7e19807c61da14f515588e95cd49886c_img.jpg\) \(66 KB\) \]](#)

General Documents

- [Ministry of Health related documents including Wellington School of Medicine report and peer review comments !\[\]\(746d018fdf6ab02bf5fb7681133e8b29_img.jpg\)](#)

Useful Resources

- [Global Invasive Species Database !\[\]\(aca6fcc8bd95e8255b9ea1b1d08ef300_img.jpg\)](#)
- [United States Department of Agriculture !\[\]\(0083087c61cec498ac803a4aec5bb1bd_img.jpg\)](#)
- [Government of British Columbia !\[\]\(2e94242fda9f31152eb2b29146bfce46_img.jpg\)](#)

Page last updated: 22 October 2008