

As at date of publication
Nov 2012 (Archive)

Peacekeeping

Afghanistan

Peace
Support
Operation

V2

(NZDF, 2012g)

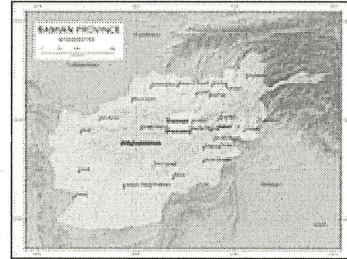
NZ PRT: Bamyan

NZDF personnel make up the NZ Provincial Reconstruction Team (NZ PRT) in Afghanistan. The twenty first and final rotation, led by Senior Military Advisor LT COL Sholto Stephens, arrived in Afghanistan in October 2012 and will remain in Afghanistan for approximately six months.

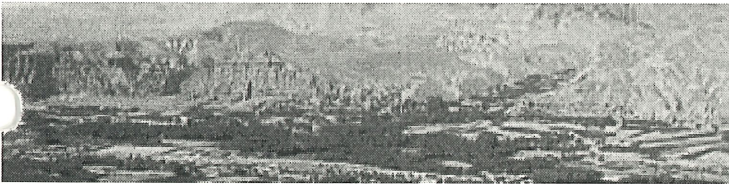
The government has announced that New Zealand's commitment to Afghanistan will be in place until April 2013.

The town of Bamian, in Bamyan Province, Afghanistan is where the NZ PRT is located. Kiwi Base and the airfield are to the south of the valley and the main township and bazaar (shopping centre) is located to the north of Kiwi Base.

In winter (Dec-Mar), the surrounding mountains and valleys are covered in snow. The township of Bamian is at an altitude close to 2,550m above sea level (Mt Ruapehu is 2,997m and some of the mountain passes are as high as Mt Cook/Aorangi).



Map of Afghanistan



The Bamyan Valley (which runs east- west) and the northern side of the valley, taken from the hilltop citadel of Gholghola.

NSE: National Support Element

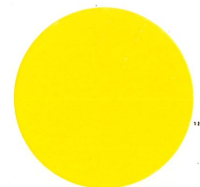
The New Zealand National Support Element (NSE) is based at Bagram Air Force Base (BAF) about an hour and a half (60km) drive north of Kabul. Their task is to provide logistical support to the NZ PRT at Kiwi Base in Bamyan and other NZDF personnel in Afghanistan.

Support Element: Middle East

Five NZDF personnel are in the Middle East to provide a support mechanism for NZDF force elements deployed to Afghanistan and to assist co-located coalition partners.

UNAMA: Jalalabad

3rd



NZDF contribution to the United Nations Assistance Mission Afghanistan (UNAMA) is one officer. The officer works as a Military Liaison Officer (MLO) providing the strategic interface between multi-national forces and Afghan authorities.

For more information: [UNAMA - Overview](#)

ISAF: Kabul

International Security Assistance Force (ISAF), Afghanistan. NZDF has four staff officers and a driver attached to HQ ISAF. The senior NZ officer works on policy and planning within the ISAF HQ.

This page was last reviewed on 8 October 2012, and is current.

