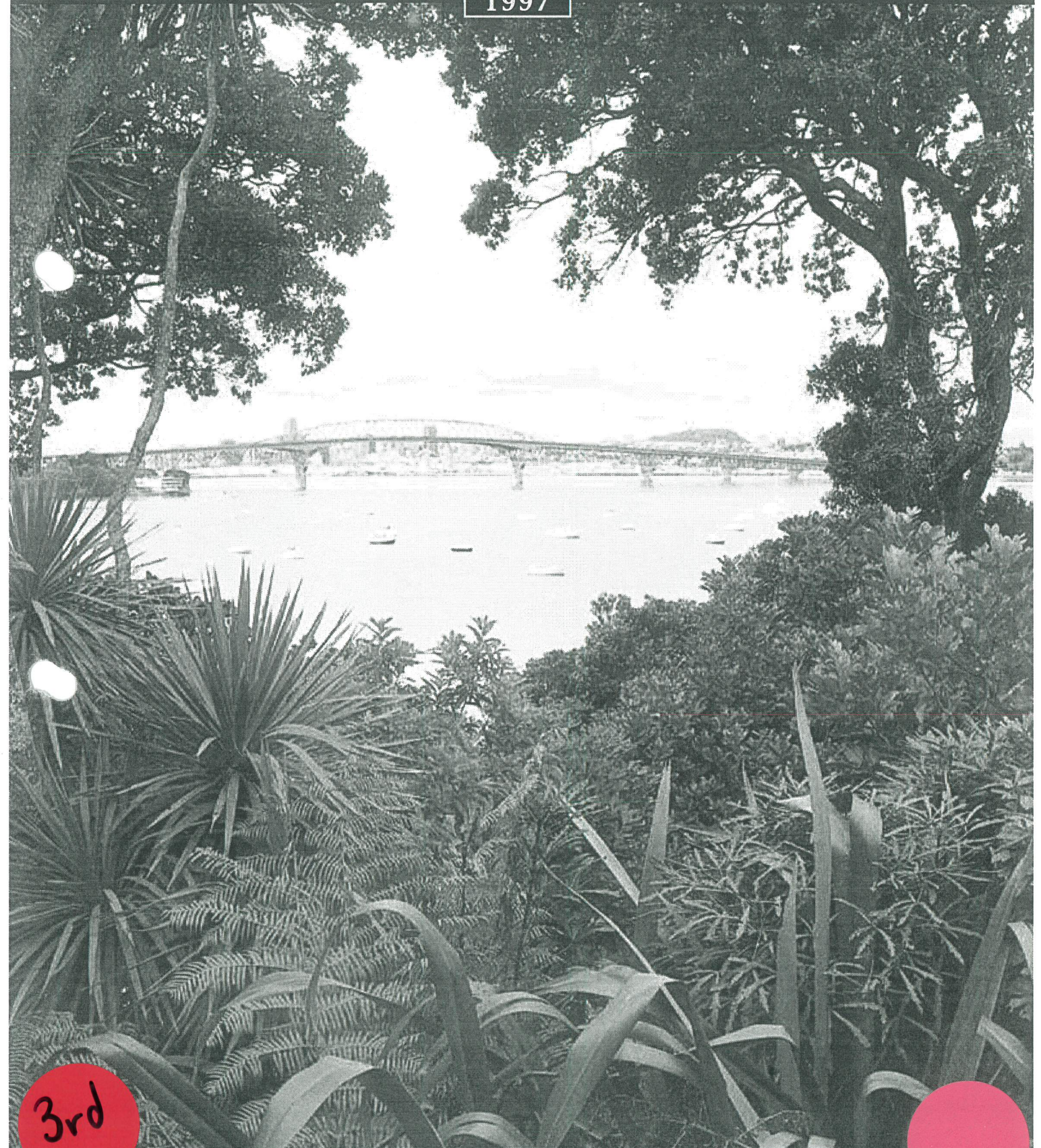


THE STATE  
NEW ZEALAND  
ENVIRONMENT

1997

Nation Dates  
Land cover graph

**MFE, 1997**



3rd



THE STATE OF  
NEW ZEALAND'S  
ENVIRONMENT

1997

#### PRODUCTION TEAM

for the

The State of New Zealand's Environment 1997

#### Principal authors

Rowan Taylor (Project Leader)

Ian Smith (Chief Editor)

#### Contributing authors

Peter Cochrane, Brigit Stephenson, Nicci Gibbs

#### Technical Editors

Anna Saunders, David Swain, Bronwen Wall

#### Layout

Origin Design Ltd

The State of New Zealand's Environment 1997

ISBN 0-478-09000-5

Published by

*The Ministry for the Environment*

*P.O. Box 10362*

*Wellington*

*New Zealand*

*GP Publications*

*P.O. Box 12052*

*Wellington*

*New Zealand*



MINISTRY FOR THE ENVIRONMENT  
MANATŪ MŌ TE TAIAO



**GP PUBLICATIONS**

**Cover photograph:** Gil Hanly. (Waitemata Harbour, Auckland, from Northcote Point.)

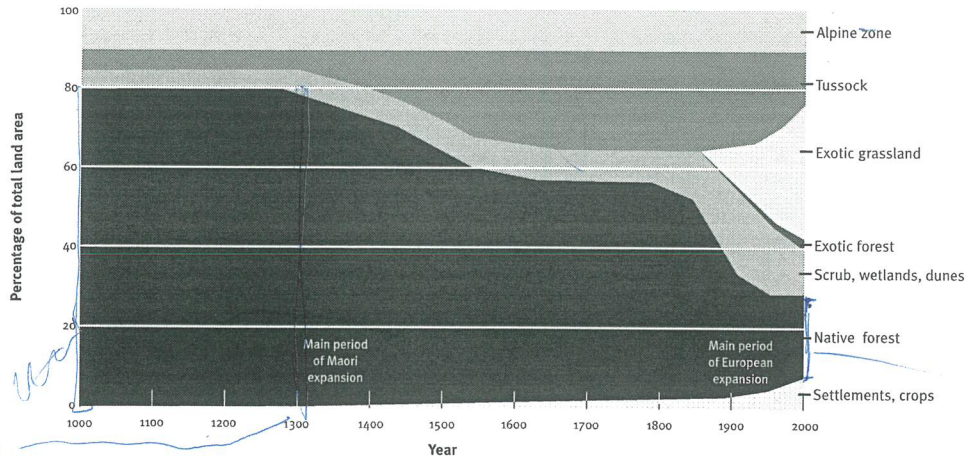
Title illustration for Chapter 2: S. Brees, 'Messrs Clifford and Vavasour's clearing', courtesy of Alexander Turnbull Library.

Title illustration for Chapter 5 courtesy of NASA.

Other photographs from the Department of Conservation and the Ministry for the Environment.

Figure 8.3

The recent history of New Zealand's land cover<sup>1</sup>.



<sup>1</sup> Vegetation areas and timing of changes are approximations only

Figure 8.4

Production of indigenous and exotic rough-sawn timber, 1876-1994.

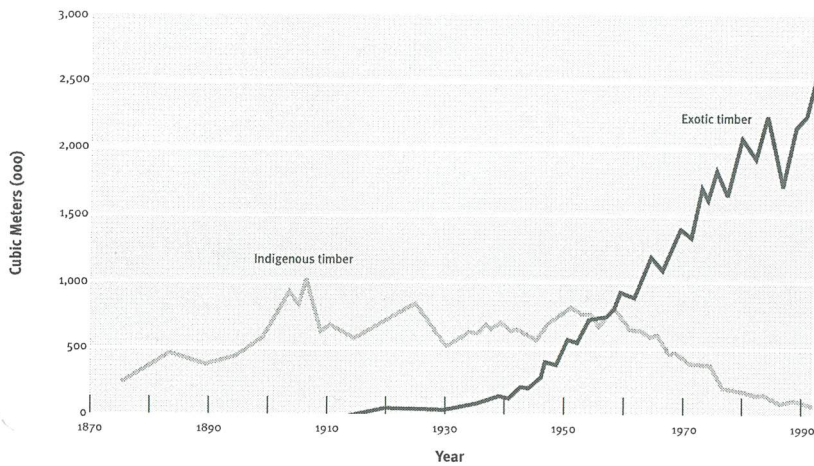
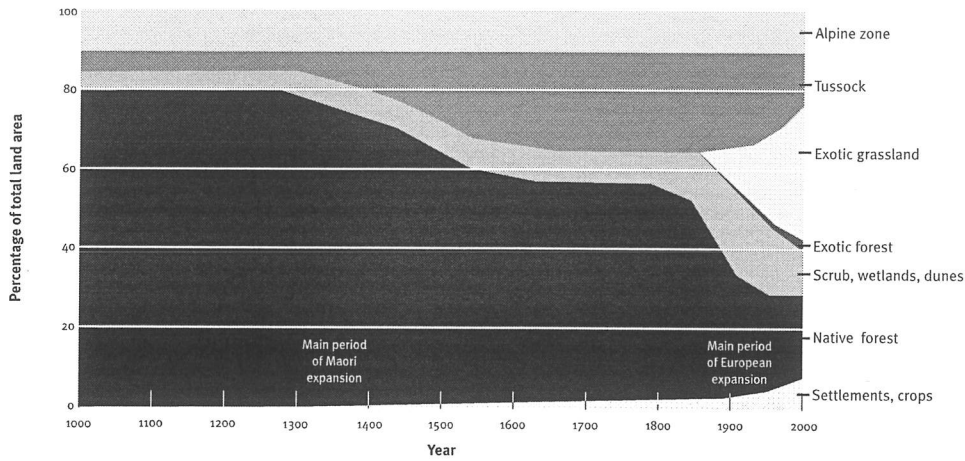


Figure 8.3

The recent history of New Zealand's land cover<sup>1</sup>.



<sup>1</sup> Vegetation areas and timing of changes are approximations only

Figure 8.4

Production of indigenous and exotic rough-sawn timber, 1876-1994.

