

THE STATE
NEW ZEALAND
ENVIRONMENT

1997

*Nation Dates
Land cover graph*

MFE, 1997



THE STATE OF
NEW ZEALAND'S
ENVIRONMENT

1997

PRODUCTION TEAM

for the

The State of New Zealand's Environment 1997

Principal authors

Rowan Taylor (Project Leader)

Ian Smith (Chief Editor)

Contributing authors

Peter Cochrane, Brigit Stephenson, Nicci Gibbs

Technical Editors

Anna Saunders, David Swain, Bronwen Wall

Layout

Origin Design Ltd

The State of New Zealand's Environment 1997

ISBN 0-478-09000-5

Published by

The Ministry for the Environment

P.O. Box 10362

Wellington

New Zealand

GP Publications

P.O. Box 12052

Wellington

New Zealand



MINISTRY FOR THE ENVIRONMENT
MANATŪ MŌ TE TAIAO



GP PUBLICATIONS

Cover photograph: Gil Hanly. (Waitemata Harbour, Auckland, from Northcote Point.)

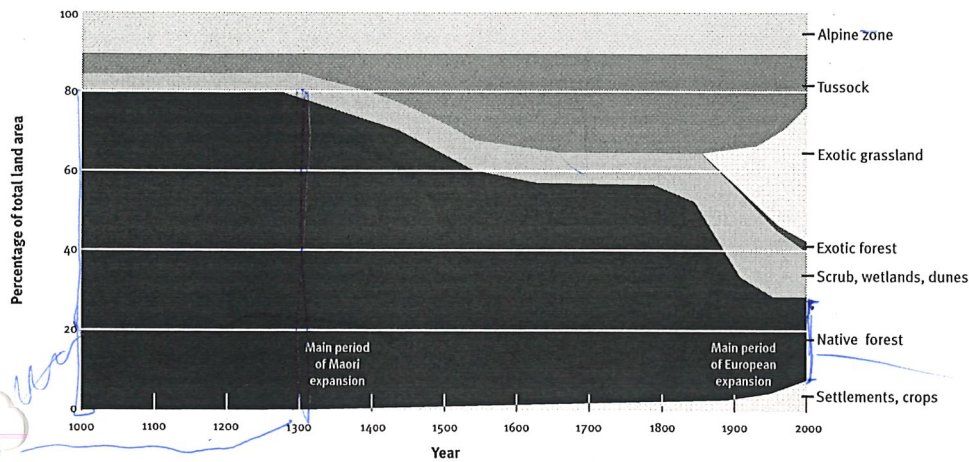
Title illustration for Chapter 2: S. Brees, 'Messrs Clifford and Vavasour's clearing', courtesy of Alexander Turnbull Library.

Title illustration for Chapter 5 courtesy of NASA.

Other photographs from the Department of Conservation and the Ministry for the Environment.

Figure 8.3

The recent history of New Zealand's land cover¹.



¹Vegetation areas and timing of changes are approximations only

Figure 8.4

Production of indigenous and exotic rough-sawn timber, 1876-1994.

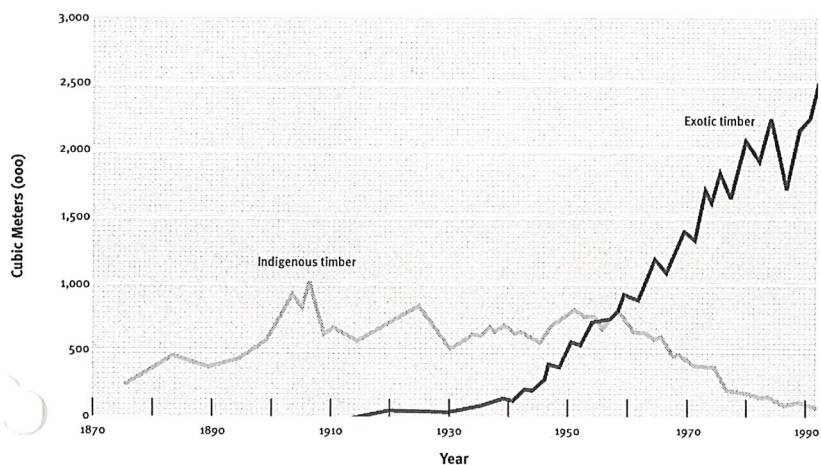
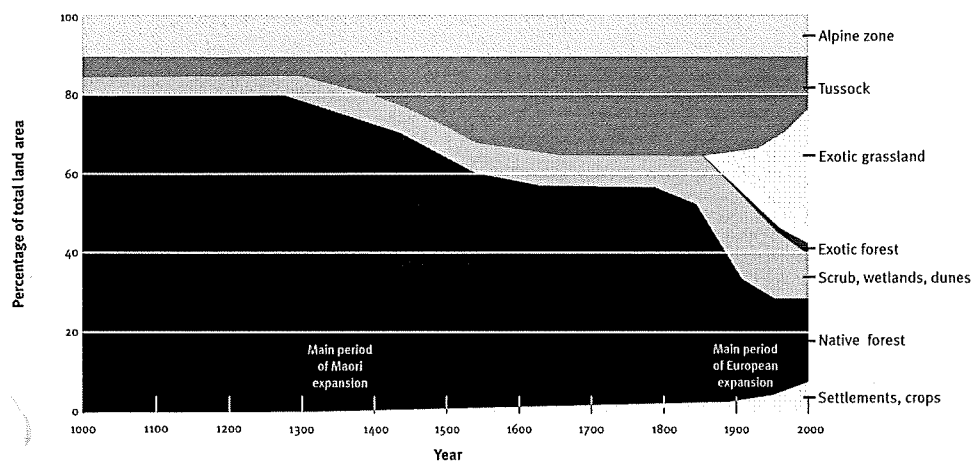


Figure 8.3

The recent history of New Zealand's land cover¹.



¹Vegetation areas and timing of changes are approximations only

Figure 8.4

Production of indigenous and exotic rough-sawn timber, 1876-1994.

