

national
coronavirus

Blommerde, 2020

ADVERTISEMENT
Advertise with
Stuff

COVID-19 timeline
16 June 2020

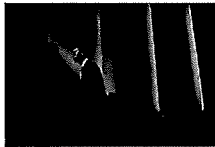
more from stuff

paid content about this content



sponsored

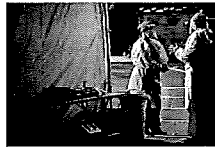
How Dole is supporting NZ charities



Covid-19: Princeton University study



Palmerston North Hospital base reclaimed



Covid-19: Two new cases, one in managed



(Pics) Historical wild west photos - The Delite



Wellington: Change is Coming to Experts In Money Insurance

Recommended by

Coronavirus: Two Hamilton teens flee funeral after isolation exemption

Chloe Blommerde · 19:27, Jun 16 2020



coronavirus

Trustworthy, accurate and reliable news stories are more important now than ever. Support our newsrooms by **making a contribution**.

Two Hamilton teenagers fled a funeral last week after their compassionate exemption from isolation was granted.

Dr Ashley Bloomfield confirmed the pair were able to attend a funeral, but later ran off from authorities.

They had since been located, with one in managed isolation and the other in an agreed community arrangement, he said.

He did not know how many days their whereabouts were unknown.

READ MORE:

- * **Coronavirus: New Zealand's Covid-confidence gets punctured**
- * **Government suspends compassionate exemptions from managed isolation**
- * **Coronavirus: Auckland hotel guests, staff isolated and tested after new cases**

Bloomfield, speaking at a press conference on Tuesday, thanked those who were involved and the "work that was done with police, the local community and iwi to help sort that out and reduce the risk to the wider community."

ADVERTISEMENT
Advertise with
Stuff

Stuff has contacted the Ministry of Health and is awaiting a response. Police initially referred the matter onto the Ministry.

national

Log in

coronavirus



GETTY-IMAGES

Director-General of Health Dr Ashley Bloomfield speaks to media during a press conference on Tuesday.

The Government has announced it is now suspending all compassionate exemptions at the border.

It comes after two women who travelled from the United Kingdom tested positive for Covid-19 after they received a compassionate exemption to leave a managed isolation facility.

Bloomfield added: "We are also intending to go back and look at any person who had an exemption since the 7th of June just to check that testing had been done prior to departure, and from a managed isolation facility or as part of their plan once they were in the community."

Cheers, Aotearoa. Thank you to our readers who have already supported Stuff's reporting. **Contribute today** to help our journalists bring you independent New Zealand news you can trust.

I'd like to contribute →

Stuff

